 **INSTRUCTIONS ON HOW TO CREATE A CORRECT FILE FOR ADHESIVE PVC**  
The following instructions are designed to help you create a proper printing file. If still in doubt, please visit our web site at the FAQ section, activate the File Verification with an operator or call our Support Service.

**1 FILE FORMAT**

Our systems only process PDF format files - not password protected.

**2 FORMAT ORIENTATION**

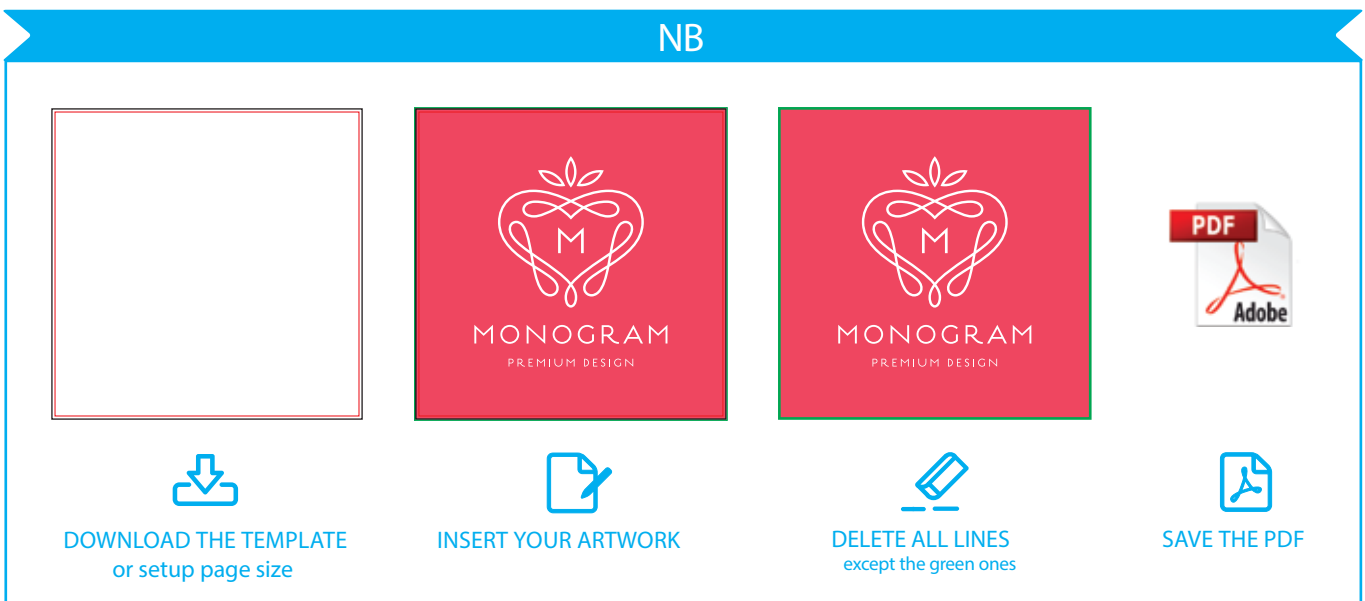
File format orientation must match the choice indicated at the time of the order - portrait or landscape.

**3 TEMPLATE**

Download template file if one is available.

We recommend to set page size file in 1:1 proportion, add your own graphic, and save it in PDF. Be careful not to place graphics in the bleed area, as they will not show on the finished product.

**NB**



**DOWNLOAD THE TEMPLATE**  
or setup page size

**INSERT YOUR ARTWORK**

**DELETE ALL LINES**  
except the green ones

**SAVE THE PDF**

**4 PANELS**

Each material has its own maximum printing size on a single piece. If your print exceeds this size, we will proceed with panelling. When ordering, and for materials requiring it, our system will advise when a product will not be delivered in a single piece.

**5 COLOUR**

The same colour can appear slightly different depending on the printing media. This is due to the material physical composition. All the colours are in CMYK (Cyan, Magenta, Yellow and Black) with embedded printing profile. Images in RGB or with PANTONE colours will be automatically converted with the standard separation profile.

**6 RESOLUTION**

The best resolution for the printing file is between 150 and 200 dpi.

**7 ADDITIONAL INFORMATION**

The minimum printable line width is 0.5 pt. The minimum printable font size is 12 pt.

We advise against positioning frames and mounts along the edges, as this may cause irregular cutting around the perimeter.

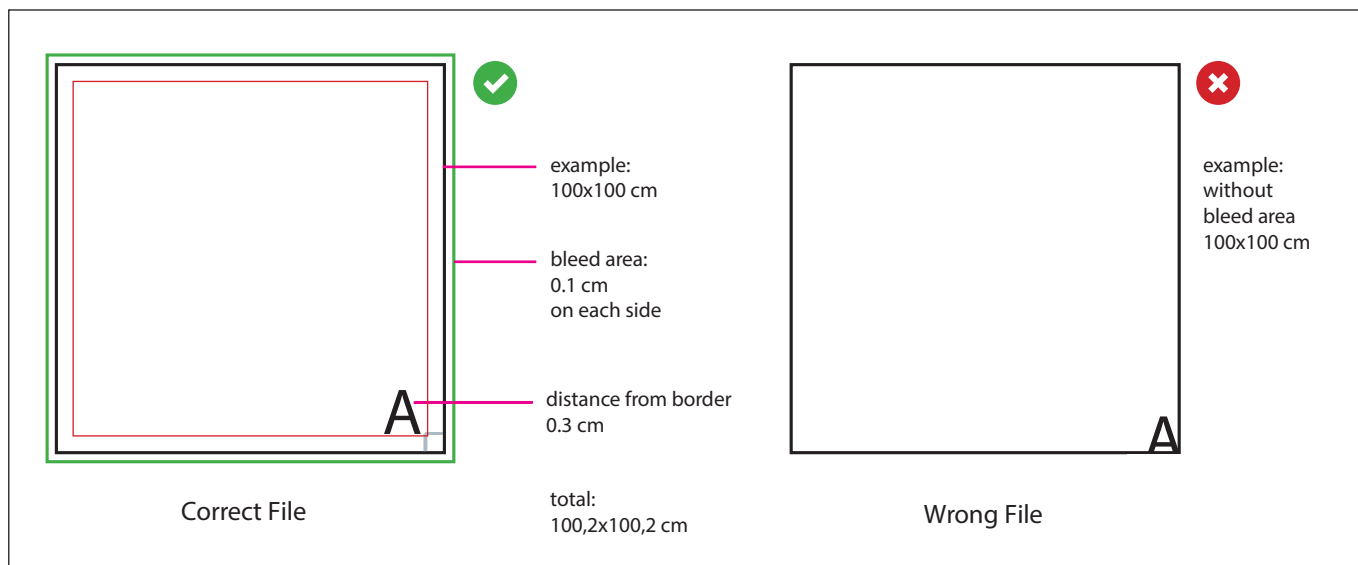
### 8 MIRRORED ADHESIVE PVC

If you have selected one of the following materials: , send us the file in a standard view - it will be mirrored when printed.

### 9 MARGINS AND BLEED AREA

Adhesive PVC require a PDF file in 1:1 scale +1 mm bleed area on each side.

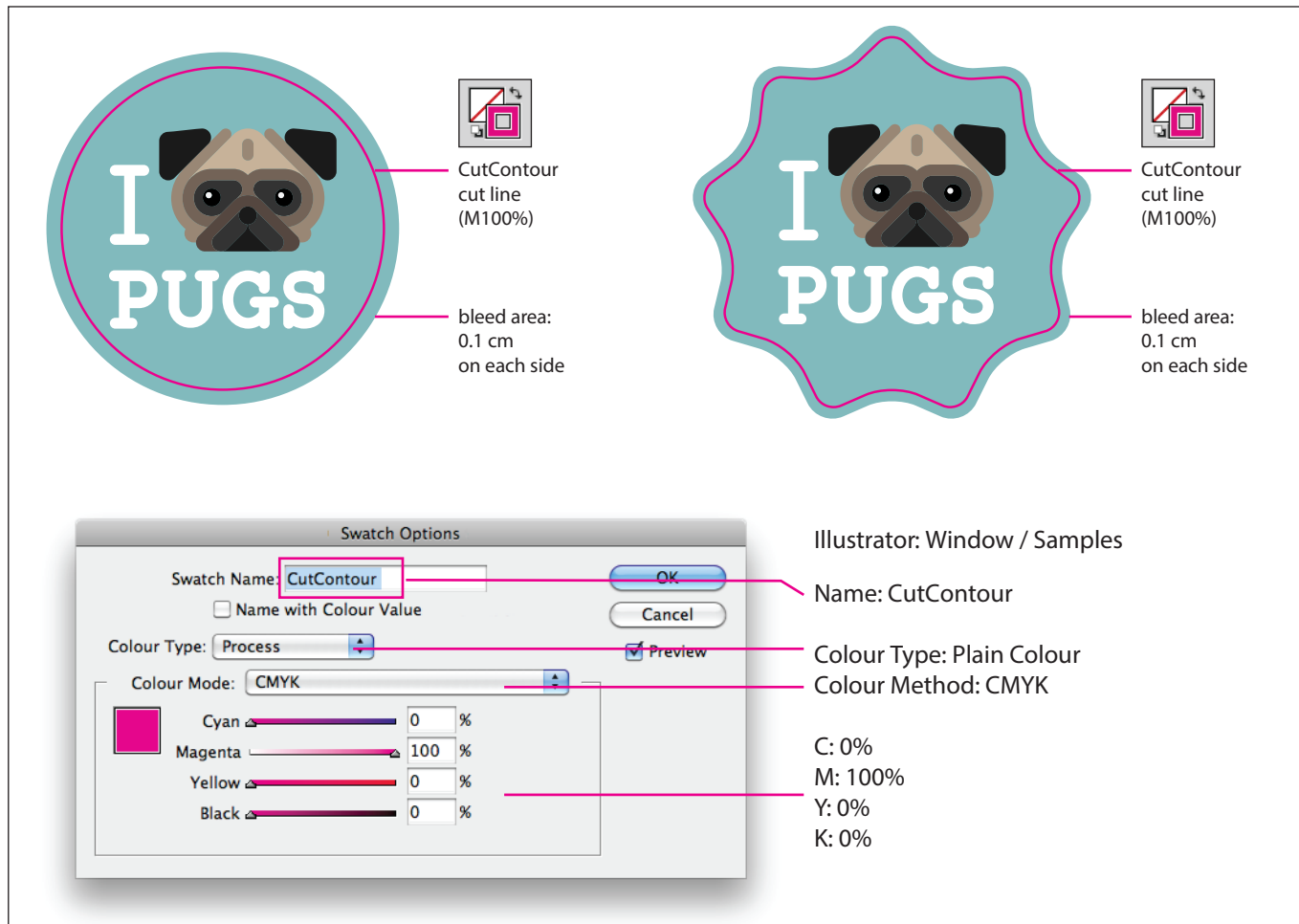
Distance of texts from cutting border must be 3 mm.



### 10 SHAPING

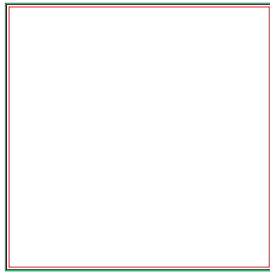
For a shaped cut, the file must be saved as a PDF containing the artwork and the cut line, which must be a vector path on a separate layer named CutContour (even if the cut is circular), you will need to assign pure magenta (M100% only). The artwork must always have a bleed of 1 mm beyond the CutContour cut line.

Finally, we would advise against creating overly complex shapes, as this could lead to an imprecise, non-uniform cut.

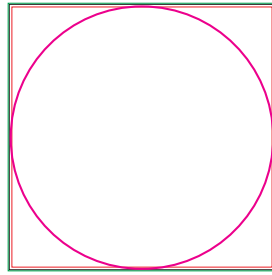


# NB: shaped cut to shape adhesive PVC

Always follow these steps:



DOWNLOAD THE TEMPLATE  
or create file



CREATE THE  
CutContour



INSERT YOUR ARTWORK

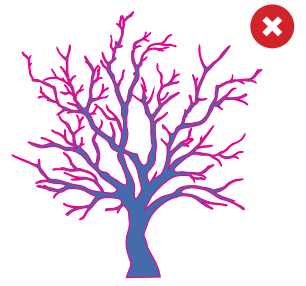
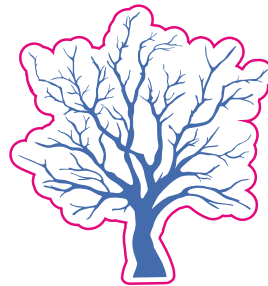


DELETE ALL LINES  
except the CutContour



SAVE THE  
PDF

Do not create overly complex shapes



The vector graphic CutContour line must be a single, unbroken line. Multiple, separate lines within the same file will not be cut.

